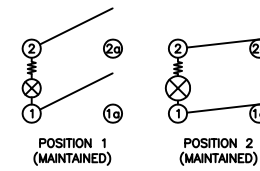


**SCHEMATIC**



**SPECIFICATIONS**

**FUNCTION:**  
2P1T OFF-ON

**RATINGS:**  
10A 125VAC [UR, cUR]  
EN 61058-1:2002:  
6(2)A 250V~ μ 1E4 T125/55 [ENEC14]

**ILLUMINATION VOLTAGE:**  
250V

**CONTACT RESISTANCE:**  
Initial: 35mΩ Max. at 50VAC

**INSULATION RESISTANCE:**  
500MΩ Min. at 500VDC

**DIELECTRIC STRENGTH:**  
1,000VAC For 1 Minute

**ELECTRICAL LIFE:**  
6,000 Cycles [UR, cUR]  
10,000 Cycles [ENEC14, SEMKO]

**TEMPERATURE:**  
Operating: -20°C to 85°C [UR, cUR]

**QUALS:**



**COLORS AND MARKINGS**

**BODY:**  
Black

**ACTUATOR:**  
Transparent Green

**MARKINGS:**  
0 Showing When Off (8)

**MARKING COLOR:**  
White

**MATERIALS**

**BODY:**  
Polyamide 6/6 (PA66), UL94 V-2

**ACTUATOR:**  
Polycarbonate (PC), UL94 V-2

**LAMP:**  
Neon Bulb

**RESISTOR:**  
Carbon Film Resistor

**MOBILE CONTACT:**  
Silver Plated Copper

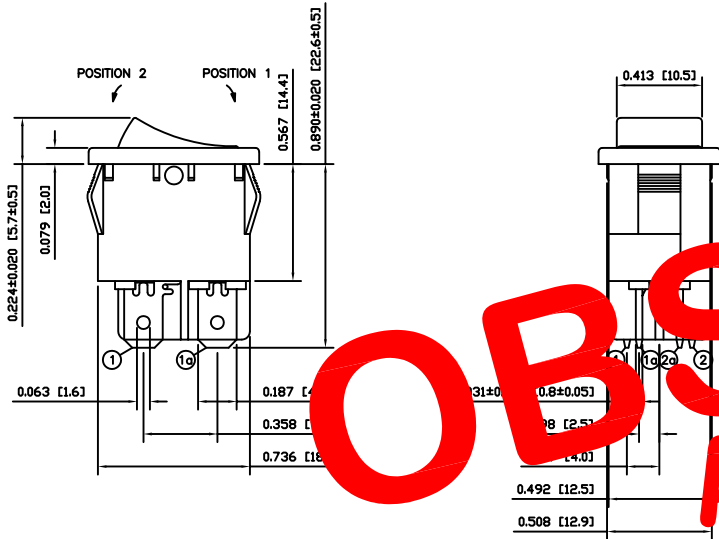
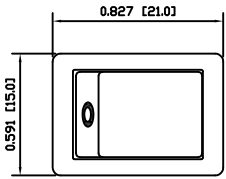
**CONTACTS:**  
Silver Alloy

**TERMINALS:**  
Silver Plated Copper  
Silver Plated Brass

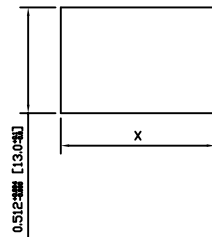
OBSOLETE

April 2018

PCR 23331



**SUGGESTED PANEL CUTOUT**



PANEL THICKNESS		X
0.030~0.049	[0.75~1.25]	0.756 [19.2]
0.049~0.079	[1.25~2.00]	0.764 [19.4]
0.079~0.118	[2.00~3.00]	0.772 [19.6]

ACTUATOR	A	09/07/30	CAB
BODY	A	09/07/30	CAB
COLORS	A	09/11/17	CAB
MATERIALS	A	09/07/30	CAB
SPECIFICATIONS	A	09/07/30	CAB
REFERENCE	REV.	DATE	BY

THE INFORMATION CONTAINED IN THIS DOCUMENT IS PROPRIETARY TO E-SWITCH-LAMB INDUSTRIES AND IS NOT TO BE COPIED OR TRANSFERRED

B	CORRECTED BULB TYPE			PCRD0241	09/12/09	CAB
A	INITIAL RELEASE			PCRD0208	09/11/17	CAB
REV.	DESCRIPTION			PCR	DATE	DRAWN BY

DIMENSIONS	
INCHES [MILLIMETERS]	
GENERAL TOLERANCES	
±0.008 [±0.2] / ±1'	
SCALE	PROJECTION
DRAWING NOT TO SCALE	1st Angle

RA81231028-137

DRAWING NUMBER 38-RA81231028137	DATE DECEMBER 9, 2009	REVISION B
------------------------------------	--------------------------	---------------